



SAIL SERVICE + COVER- & SPRAY HOOD CONDITIONING



# PROCESSES FOR DACRON, LAMINATES & FOIL SAILS

RED GULL cleaning processes maintain the actual sail quality

PRO<sub>2</sub>  
PROFESSIONAL  
PROTECTION

reappearing shine during PRO-2 Regeneration process



## CLEANING

Doyle Sails Finland



## PROTECTION

Smedsvägen 47B



## PERFORMANCE

FIN-07900 Lovisa



## QUALITY

Phone +358 19 533 167



SAIL CLEANING SAIL REGENERATION COVER CLEANING



**PRO**<sub>2</sub>  
PROFESSIONAL  
PROTECTION

sail check – set of sails X-50



**SAIL AGED**  
*Dirty & full of mildew*



**SAIL AGED**  
*lost profile & soft structure*



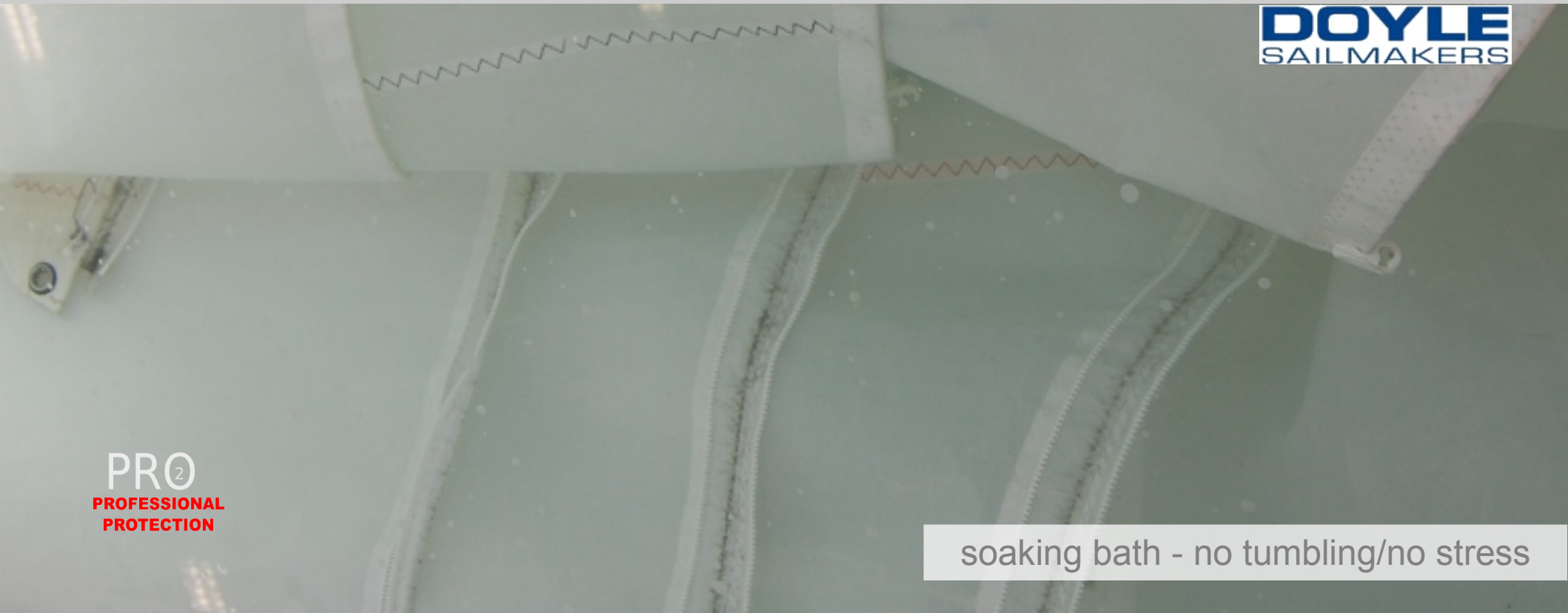
**SAIL REGENERATED**  
*white, stiff, crackly, proof*



**SPECTRA SAIL**  
*proof & protected*



SAIL CLEANING SAIL REGENERATION COVER CLEANING

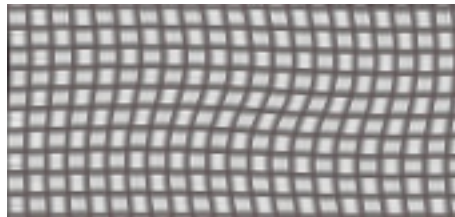


PRO<sub>2</sub>  
PROFESSIONAL  
PROTECTION

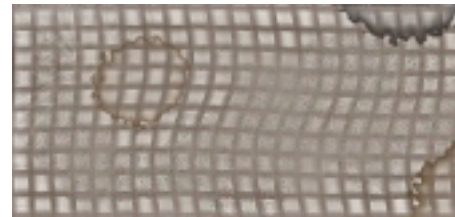
soaking bath - no tumbling/no stress



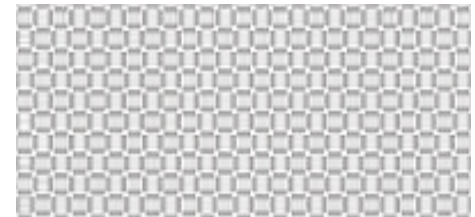
**SAIL AGED**  
*darkened over years*



**SAIL STRESSED**  
*lost profile over mileage*



**SAIL DIRTY**  
*salt, spots, wheather, mildew*



**SAIL REGENERATED**  
*clean, performing, proof, stiff*

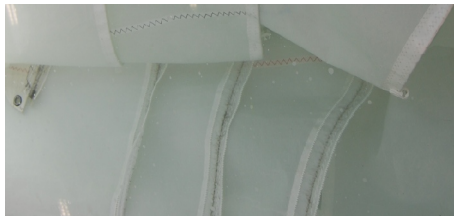


SAIL CLEANING SAIL REGENERATION COVER CLEANING



PRO<sub>2</sub>  
PROFESSIONAL  
PROTECTION

unrinsed & rinsed after bath



**SAILS IN BATH**  
loosening organic dirt



**CHEMICAL CLEANING**  
removing inorganic dirt



**DRYING SAILS**  
for regeneration process



**SPIS/GENAKERS**  
only rinsing\*

*Spinakers & Genakers will not follow the washing procedures, due to colour instability items\**

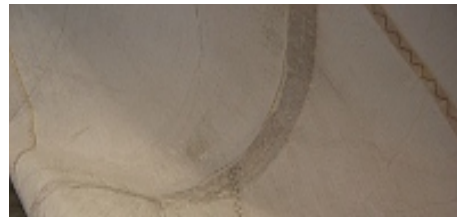


SAIL CLEANING SAIL REGENERATION COVER CLEANING



PRO<sub>2</sub>  
PROFESSIONAL  
PROTECTION

limitations in cleaning



**MILDEW IN LAMINATE**  
*impossible to remove*

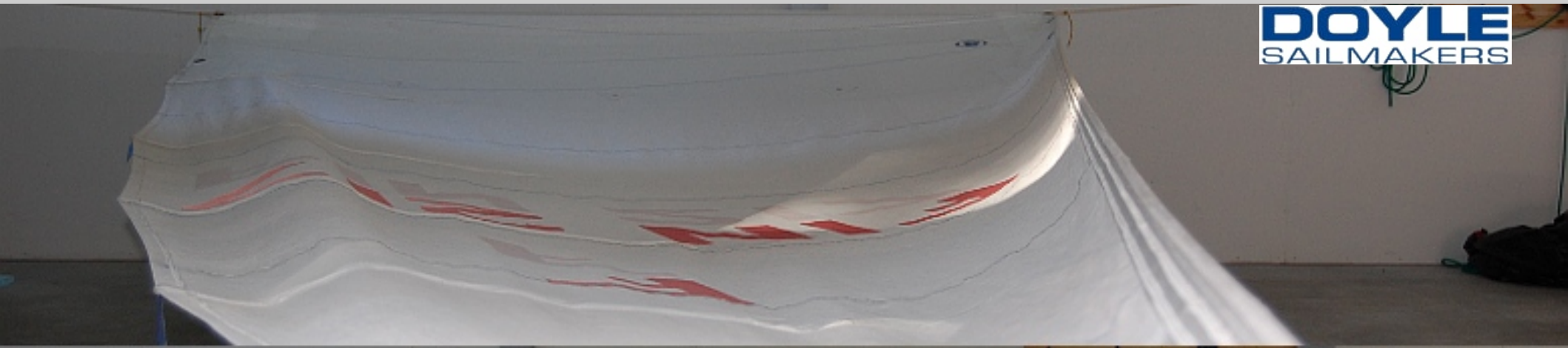
**MILDEW IN STICHINGS**  
*impossible when in stiching tape*

**ALGAE & GREENS**  
*no problem to remove*

**MILDEW IN DACRON**  
*in single layers, no problem*



SAIL CLEANING SAIL REGENERATION COVER CLEANING



**PRO<sub>2</sub>**  
PROFESSIONAL  
PROTECTION

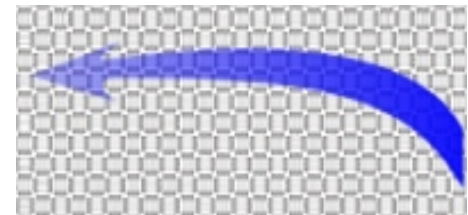
regained profile & regenerated luff tension



**PERFORMANCE I**  
*regained profile*



**PERFORMANCE II**  
*stiff sail profile in light wind*



**PERF. III & PROT. I**  
*impermeability*



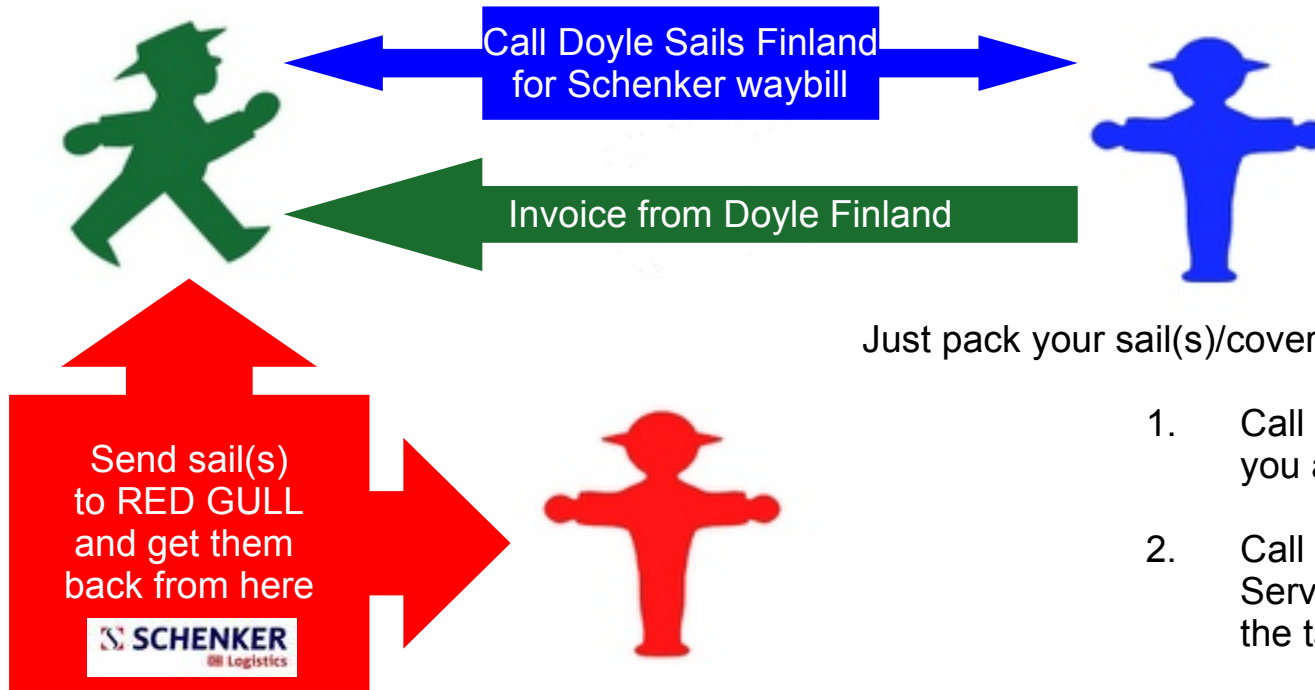
**PROTECTION II**  
*hydrophobicity & structure*



SAIL CLEANING

SAIL REGENERATION

COVER CLEANING



Just pack your sail(s)/covers & do 2 phone calls:

1. Call Doyle Sails to send you a waybill & sail tags
2. Call the Schenker-Express Service phone number on the tag, to pick up your sails

Can be ordered from anywhere in Finland



**WAYBILL & TAGS**  
call Doyle Sails



**PACK & SEND**  
directly to RED GULL



**TRANSPORT**  
by SCHENKER-EXPRESS



**RETURNED DIRECTLY**  
invoice from Doyle Sails



Consumer Prices 2009/2010:

	<u>Price:</u>	<u>Minimum Price always:</u>
- Sail Regeneration	15,-- €/m <sup>2</sup> ,	0-10 m <sup>2</sup> = 125,-- €
- Sail Recovery	12,-- €/m <sup>2</sup> ,	0-10 m <sup>2</sup> = 100,-- €
- Sail Cleaning + Mildew removal	9,-- €/m <sup>2</sup> ,	0-10 m <sup>2</sup> = 75,-- €
- Sail Cleaning	7,-- €/m <sup>2</sup> ,	0-10 m <sup>2</sup> = 60,-- €
- Sail Rinsing (Compeition sails & Spi/Genakers)	3,- €/m <sup>2</sup> ,	0-10 m <sup>2</sup> = 25,-- €
- Spray Hood & Cover Conditioning	35,50 €/kg	(consists allways of cleaning + proofing)

All Services available from Doyle Sails Finland, Smedsvägen 47B, FIN-07900 Lovisa, Phone +358 19 533 167

- Logistics: SCHENKER Logistics

For logistics in Finland, attractive transport rates can be obtained through Doyle Sails Finland. Sails can be picked up anywhere in Finland - call for waybills!

One way from/to Nummela:

- 0-10 kg, € 12,00
- 10-20 kg, € 20,00
- 20-30 kg, € 25,00
- 30-50 kg, € 30,00
- 50-80 kg, € 35,00

Surface Definition for invoicing:  $\frac{\text{Luff x foot}}{2} = \text{invoicing surface}^*$

Can be ordered from anywhere in Finland

\* The invoicing surface is a purely calculatoric surface, measurements will be carried out by RED GULL OY/AB before washing



**WAYBILL & TAGS**  
call Doyle Sails



**PACK & SEND**  
directly to RED GULL



**TRANSPORT**  
by SCHENKER-EXPRESS



**RETURNED DIRECTLY**  
invoice from Doyle Sails